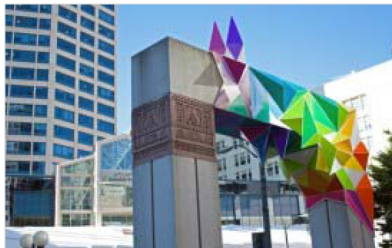


Sessions and forums

TAC/TAC Session – Going Public: Transitioning from Studio Art to Public Work (<http://tactacoma.org/2013/11/07/tactac-session-going-public-transitioning-from-studio-art-to-public-work/>)

POSTED ON NOVEMBER 7, 2013 ([HTTP://TACTACOMA.ORG/2013/11/07/TACTAC-SESSION-GOING-PUBLIC-TRANSITIONING-FROM-STUDIO-ART-TO-PUBLIC-WORK/](http://TACTACOMA.ORG/2013/11/07/TACTAC-SESSION-GOING-PUBLIC-TRANSITIONING-FROM-STUDIO-ART-TO-PUBLIC-WORK/))

UPDATED ON NOVEMBER 17, 2013 ([HTTP://TACTACOMA.ORG/2013/11/07/TACTAC-SESSION-GOING-PUBLIC-TRANSITIONING-FROM-STUDIO-ART-TO-PUBLIC-WORK/](http://TACTACOMA.ORG/2013/11/07/TACTAC-SESSION-GOING-PUBLIC-TRANSITIONING-FROM-STUDIO-ART-TO-PUBLIC-WORK/))



(http://tactacoma.files.wordpress.com/2013/11/westlakepark01_600px_wide_76k.jpg)

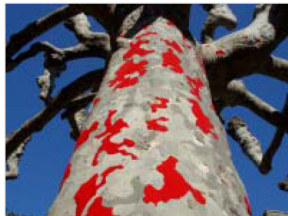
Elizabeth R Gahan's
"Chromatic Crystallization"

Have you ever wondered what goes into creating public art? The work you see in public spaces is often much different than studio work, yet most public artists come to the field from some kind of private studio practice. Going Public will explore the transition from

studio to public work and offer some insight into the process.

Panelists for Going Public come to public art from a range of media and experiences, including as gallery artists, business owners, and temporary installation artists. The panel includes both artist-fabricators and artists who work with fabricators. Going Public is perfect for artists who have considered working publicly, people interested in how public artwork is created, people interested in peeking "behind the scenes," and arts enthusiasts.

To make the talk that much richer, it'll be accompanied by a temporary art exhibit. We've asked panelists to bring models, planning documents, and examples of studio work to enhance the experience and give attendees a little view into what it actually takes to bring your work from the studio to the public realm.



(<http://tactacoma.files.wordpress.com/2013/11/01-1.jpg>)

Yuki Nakamura's "Trespass"

About the Panel: Going Public: Transitioning from Studio Art to Public Work will explore the differences between public and studio artwork, and look into the process of making that transition. We'll give each panelist 10 minutes to share his or her experience, then move into a moderated discussion lead by experienced public artist

Recent Posts

TACT/TAC is Saturday, November 16 (<http://tactacoma.org/2013/11/15/tactac-is-saturday-november-16/>)

Check out the TAC/TAC write-up over on the Tacoma Weekly (<http://tactacoma.org/2013/11/08/check-out-the-tactac-write-up-over-on-the-tacoma-weekly/>)

TAC/TAC Session – Going Public: Transitioning from Studio Art to Public Work (<http://tactacoma.org/2013/11/07/tactac-session-going-public-transitioning-from-studio-art-to-public-work/>)

Metro Arts: A Model for Alternative Arts Education (<http://tactacoma.org/2013/11/05/metro-arts-a-model-for-alternative-arts-education/>)

TAC/TAC Sessions: Online Engagement for Beginners and Next Steps for Power Users (<http://tactacoma.org/2013/10/30/tactac-online-engagement/>)

TAC/TAC on Twitter



Elizabeth Conner. We'll ask such questions as: How is your process different working in the studio vs. creating public work? How has your work changed because of the public process? What challenges has public work presented for your practice? What rewards?

Where/When: Saturday, November 16,

10m-3pm, The Rotunda at the University of Puget Sound. The exhibition will also be open during lunch, directly before the panel.

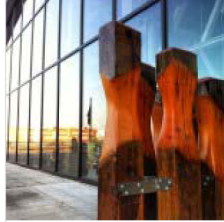
Diane Hansen's "Lock-On Tacoma"

Panelists:

Bret Lyon

A native of Tacoma, Bret received his B.A. and M.F.A in Sculpture from Central Washington University. Bret has shown in several group and solo exhibitions, and recently installed his first public art commission at the Foss Waterway Seaport in June. Bret served on the Tacoma Arts Commission from 2003-2007 and was Vice President of Tacoma Contemporary from 2006-2010.

He enjoys crossing the lines of different disciplines and taking on new and different challenges in whatever form the art takes.



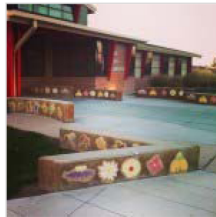
(http://tactacoma.files.wordpress.com/2013/10/56ff5b60347011e3ba51) Bret Lyon's "Lot 411"

Elizabeth R Gahan

Elizabeth R Gahan is a Seattle-based artist whose current art practice combines 2D studio art and public installation art. She received a BA from UC Santa Barbara and a MFA from Claremont Graduate University. Gahan has been awarded multiple fellowships, grants and public commissions including Artist Trust GAP Grant, City of Seattle 1% for Arts Fund, Seattle City Artist Project Grant, Storefronts Seattle, Spaceworks Tacoma, Seattle Art Interruptions, Bellas Artes at the University of Barcelona Spain, Helen B. Dooley Art Fellowship, Museum and Cultural Management Academic Fellowship, Claremont Graduate University Faculty Selected Art Fellowship, and Jeanie Anderson Memorial Fund Grant.

Claudia Riedener

Claudia is a Swiss-born, self-taught ceramic muralist and tile maker, nature enthusiast and lover of all things Tacoma. Her public installations include: South Tacoma Public Library, Masa Restaurant Tacoma, Bellarmine School Tacoma, McCarver Park Tacoma, Multi-Care Tree House Tacoma, Hops Arbor at Ruston Waterwalk, and Sage Point Elementary School in Moses Lake.



(http://tactacoma.files.wordpress.com/2013/11/e1407224450411e389k) Claudia Riedener's "Anthropods in Bloom"

Diane Hansen

As a young girl, Diane studied classical art with a French Countess who had a tremendous influence on her. After attending Arizona State University, Diane, a native Washingtonian, discovered the Northwest Glass Movement after being invited to attend the 1989 Pilchuck Auction. She became captivated with glass, and soon began glassblowing at Pratt Fine Arts Center and Pilchuck Glass School. Diane exhibits both nationally and internationally and is currently working on a large-scale Sound Transit commission for the city of Tacoma. Diane is also the co-owner of Bellaballs, a studio that creates handblown glass floats for a variety of occasions.

Yuki Nakamura

Yuki Nakamura is a Tacoma-based artist. She graduated from Joshibi University of Art and Design, Tokyo in 1994, and earned a Master of Fine Arts degree from University of Washington in 1997. She has had

Tweets

Follow

weeklyvolcano 16 Nov
@weeklyvolcano

Diane Hansen gave a fascinating talk on her Lock-On Tacoma art. Opens 11-21 at 5pm. #TACTAC @Rotunda
instagram.com/p/gyrhuHIQNX/

Retweeted by TAC/TAC
Expand

BroadwayCenter 16 Nov
@BroadwayCenter

David Fischer, our Executive Director, in great company on the final panel at @tactactacoma on Places...
instagram.com/p/gzLU05G4UQ/

Retweeted by TAC/TAC
Expand

TAC/TAC 16 Nov
@TACTACTacoma

The theory of constraint: our art takes the shape of its container. #tactac @BroadwayCenter #DavidFischer

Expand

TAC/TAC 16 Nov
@TACTACTacoma

Move away from the systematic. Inject your projects with creativity to keep it inspiring and fun. #tactac #apeopleschoir

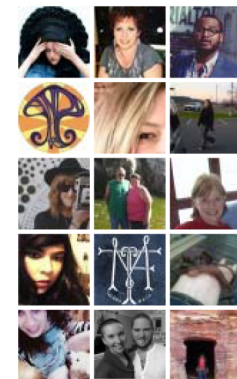
TAC/TAC 16 Nov
@TACTACTacoma

More communal singing! #apeopleschoir #tactac

Tweet to @TACTACTacoma

Arts Leadership Lab - Tacoma
Like

211 people like Arts Leadership Lab - Tacoma.



Facebook social plugin

Recent Comments

solo exhibitions at Peeler Art Center, DePauw University in Greencastle, SOIL Gallery in Seattle and Howard House Contemporary Art in Seattle. Her collaborations have been featured at Henry Art Gallery in Seattle, Santa Fe International New Media Festival and Kittredge Gallery in Tacoma. Yuki is the recipient of numerous awards including a Pollock-Krasner Grant, Artist Trust Fellowship, and the Joshibi Creative and Research Fellowship.

Elizabeth Conner will be moderating the discussion. A sculptor and installation artist, Elizabeth has more than 20 years of experience creating work for public places throughout the United States. She holds an MFA in Visual Art from Vermont College and currently teaches art at the University of Washington Tacoma. Elizabeth has been a member of the Services to Artists Committee of the College Art Association, was one of the 12 original members of VALISE Gallery and Collective on Vashon Island, and is currently serving on the Washington State Arts Commission.